

International

國際新景觀

# new landscape

11 / 2010 Vol. 2 Price: AUD 28 / USD 20 / RMB 58

Topic 專題

Arts of Rattan 藤藝

Feature 特寫

High-rise Residential  
Landscape 高層住宅景觀

ISSN 1833-0673



9 771833 067003 >

# Mysteries of the Middle East

遠至中東的設計

Francis Landscapes 弗蘭西斯景觀公司



#### 公司概況 Profile:

弗雷德里克·弗蘭西斯出於對自然的熱愛和尊重以及童年時代就萌發的情懷，選擇了景觀設計師這一職業。他所設計的景觀獨具創造力，表現了寧靜與和諧的元素，觸動了心靈，流露出真實的感覺。

弗蘭西斯於1988年在法國獲得了景觀設計師學位，之後畢業於比利時，於1992年成爲一名景觀設計師。他於1993年回到黎巴嫩，經營著1987年創立的弗蘭西斯景觀公司。

在過去的12年間，弗雷德里克·弗蘭西斯在

黎巴嫩國內外獲得了衆多獎項，贏得了廣泛的榮譽。這些獲得獎項的完工項目囊括了各種類別，如城市、休閒、體育、教育、山區和高山度假區、公共公園、酒店等。除了與高品質的國際建築公司合作外，弗蘭西斯景觀公司目前正著手各種大型項目，遍及中東、非洲、歐洲等區域，如黎巴嫩、埃及、約旦、敘利亞、沙特阿拉伯、阿拉伯聯合酋長國、科威特、尼日利亞、阿爾及利亞、摩洛哥、塔吉克斯坦、法國、比利時、英國。

Frederic Francis is a landscape architect who has chosen this very particular profession out of deep passion and respect for nature, feelings that extend back to early childhood. His creative landscapes express harmony and serenity that can provide a real enchantment for the soul.

After earning a Landscape Design degree in France in 1988, Francis graduated in Belgium as a landscape architect in 1992. Since his return to Lebanon in 1993, he has been managing Francis Landscapes sol Offshore which was established in 1987.

Frederic Francis has won numerous competitions for projects in Lebanon and abroad during these 12 years, earning him a wide reputation. Among the completed projects are urban, leisure, sports and educational projects, mountain and beach resorts, public parks, hotels. In collaboration with high profile international architectural firms, Francis Landscapes sol Offshore is currently working on large-scale projects across the Middle East, Africa and Europe located in Lebanon, Egypt, Jordan, Syria, Saudi Arabia, U.A.E, Kuwait, Nigeria, Algeria, Morocco, Tajikistan, France, Belgium and England.



## 魔幻之境 A Magical Setting

Credits:  
Subject: Article on Gardens  
Project: A Magical Setting  
Completion Date: 2001  
Location: Faqra, Lebanon

Designer: Frederic Francis  
Photographer: Fares Jammal  
Size: 4,000m<sup>2</sup>  
2001 Rehabilitated 2010 - 2011

無論白天還是夜晚，安詳與秩序如河水流一樣清  
澈，充滿點綴美  
Peace and order reign night and day when  
everything is as clear and fluid as water.  
(Photo: Fares Jammal)





Photo: SCAD

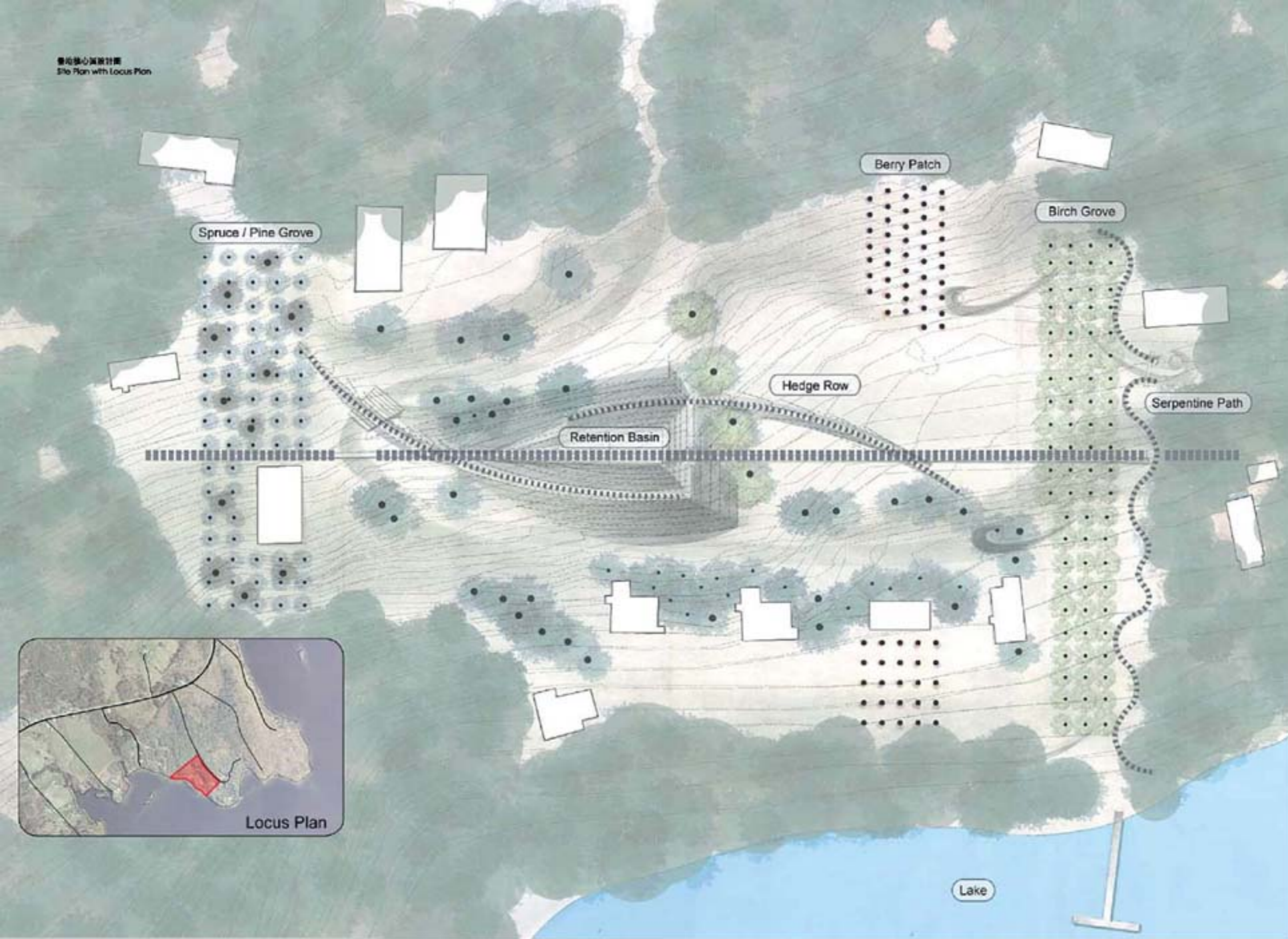
Photo: SCAD

該大型牆面蕙藝裝置依附于Habersham會堂修葺部分的空曠作為結構支撐。由于Habersham會堂曾經作為磚級型數，因此蕙藝裝置中採用了大量寬邊出口的波濤式空洞。

Cell Division | 細胞分離 |



Credits:  
Landscape: ONG&ONG Pte Ltd  
Design Team: Peter Frank Bridgewater  
Client: Chyea Pwu Developments  
Location: 138 Grange Road, Singapore  
Site Area: 0.35 Ha  
Completion: December 2009



历史风貌 Historic View



现有状况 Existing Conditions

簡潔的對角軸線演繹純粹的景觀藝術，詩意的設計手法渲染出獨一無二的景觀意境。徑流排水系統與經濟性主題的綜合應用節儉而不失優雅。這些微妙的改善賦予場地強大的特色，這處營地景觀對遊人的重要性由此可見一斑。

*With a simple diagonal axis, it brings a simple solution of landscape art. It's poetic in how it makes this place very special. The economy of the theme and the integration of stormwater drainage is simply beautiful. These improvements do not in any way alter a very subtle but powerful character of the camp site. The importance of this landscape to the user comes through.*

—2010年美國景觀設計師協會專業獎評語  
2010 Professional Awards Jury